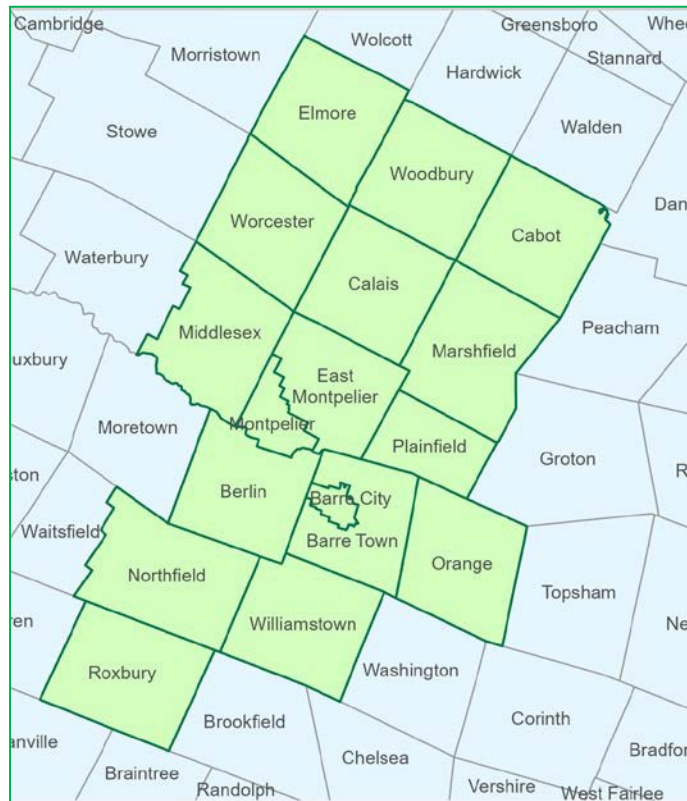




# Community Profiles



**CVFiber**

**A Vermont Communications Union District**

**March 2022**

Barre City

Barre Town

Berlin

Cabot

Calais

Duxbury

East Montpelier

Elmore

Marshfield

Middlesex

Montpelier

Moretown

Northfield

Orange

Plainfield

Roxbury

Washington

Waterbury

Woodbury

Worcester

Williamstown

Data Source: Esri, US Census Bureau, and ACS.

Prepared by David Healy | healy.david.j@gmail.com | 12/31/2019

## KEY FACTS

8,792

Population



Average Household Size

40.8

Median Age

\$40,587

Median Household Income

## EDUCATION

13%

No High School Diploma



34%

High School Graduate



28%

Some College



26%

Bachelor's/Grad/Prof Degree

## BUSINESS



523

Total Businesses



4,642

Total Employees

## EMPLOYMENT



66%

White Collar



19%

Blue Collar



Services



Unemployment Rate

## INCOME



\$40,587

Median Household Income



\$23,479

Per Capita Income



\$21,177

Median Net Worth

## Households By Income

The largest group: <\$15,000 (19.2%)

The smallest group: \$200,000+ (0.5%)

Indicator	Value	Difference	
<\$15,000	19.2%	+9.3%	
\$15,000 - \$24,999	14.1%	+5.8%	
\$25,000 - \$34,999	9.7%	+1.3%	
\$35,000 - \$49,999	15.3%	+4.0%	
\$50,000 - \$74,999	18.2%	-2.9%	
\$75,000 - \$99,999	10.6%	-4.1%	
\$100,000 - \$149,999	11.4%	-5.0%	
\$150,000 - \$199,999	0.9%	-3.9%	
\$200,000+	0.5%	-4.6%	

Bars show deviation from Washington County

# Town of Barre

BARRE TOWN

## KEY FACTS

7,887

Population



2.4

Average Household Size

46.8

Median Age

\$68,076

Median Household Income

## EDUCATION

5%

No High School Diploma



37%

High School Graduate



27%

Some College



31%

Bachelor's/Grad/Prof Degree

## BUSINESS



240

Total Businesses



2,504

Total Employees

## EMPLOYMENT



67%

White Collar



20%

Blue Collar



13%

Services

2.7%

Unemployment Rate

## INCOME



\$68,076

Median Household Income



\$34,636

Per Capita Income



\$230,994

Median Net Worth

## Households By Income

The largest group: \$50,000 - \$74,999 (22.3%)

The smallest group: \$200,000+ (4.1%)

Indicator	Value	Difference	
<\$15,000	4.9%	-3.8%	<div style="width: 100%; height: 10px; background-color: green;"></div>
\$15,000 - \$24,999	7.2%	-1.1%	<div style="width: 100%; height: 10px; background-color: green;"></div>
\$25,000 - \$34,999	8.2%	-0.8%	<div style="width: 100%; height: 10px; background-color: green;"></div>
\$35,000 - \$49,999	12.0%	-2.7%	<div style="width: 100%; height: 10px; background-color: green;"></div>
\$50,000 - \$74,999	22.3%	+0.1%	<div style="width: 100%; height: 10px; background-color: blue;"></div>
\$75,000 - \$99,999	17.2%	+2.6%	<div style="width: 100%; height: 10px; background-color: blue;"></div>
\$100,000 - \$149,999	17.5%	+2.7%	<div style="width: 100%; height: 10px; background-color: blue;"></div>
\$150,000 - \$199,999	6.6%	+2.2%	<div style="width: 100%; height: 10px; background-color: blue;"></div>
\$200,000+	4.1%	+0.8%	<div style="width: 100%; height: 10px; background-color: blue;"></div>

Bars show deviation from Orange County

# Town of Berlin

BERLIN

## KEY FACTS

2,891

Population



2.3

Average Household Size

50.9

Median Age

\$64,537

Median Household Income

## EDUCATION

7%

No High School Diploma



36%

High School Graduate



28%

Some College



29%

Bachelor's/Grad/Prof Degree

## BUSINESS



310

Total Businesses



6,790

Total Employees

## EMPLOYMENT



67%

White Collar



19%

Blue Collar



14%

Services

4.0%

Unemployment Rate

## INCOME



\$64,537

Median Household Income



\$36,544

Per Capita Income



\$204,457

Median Net Worth

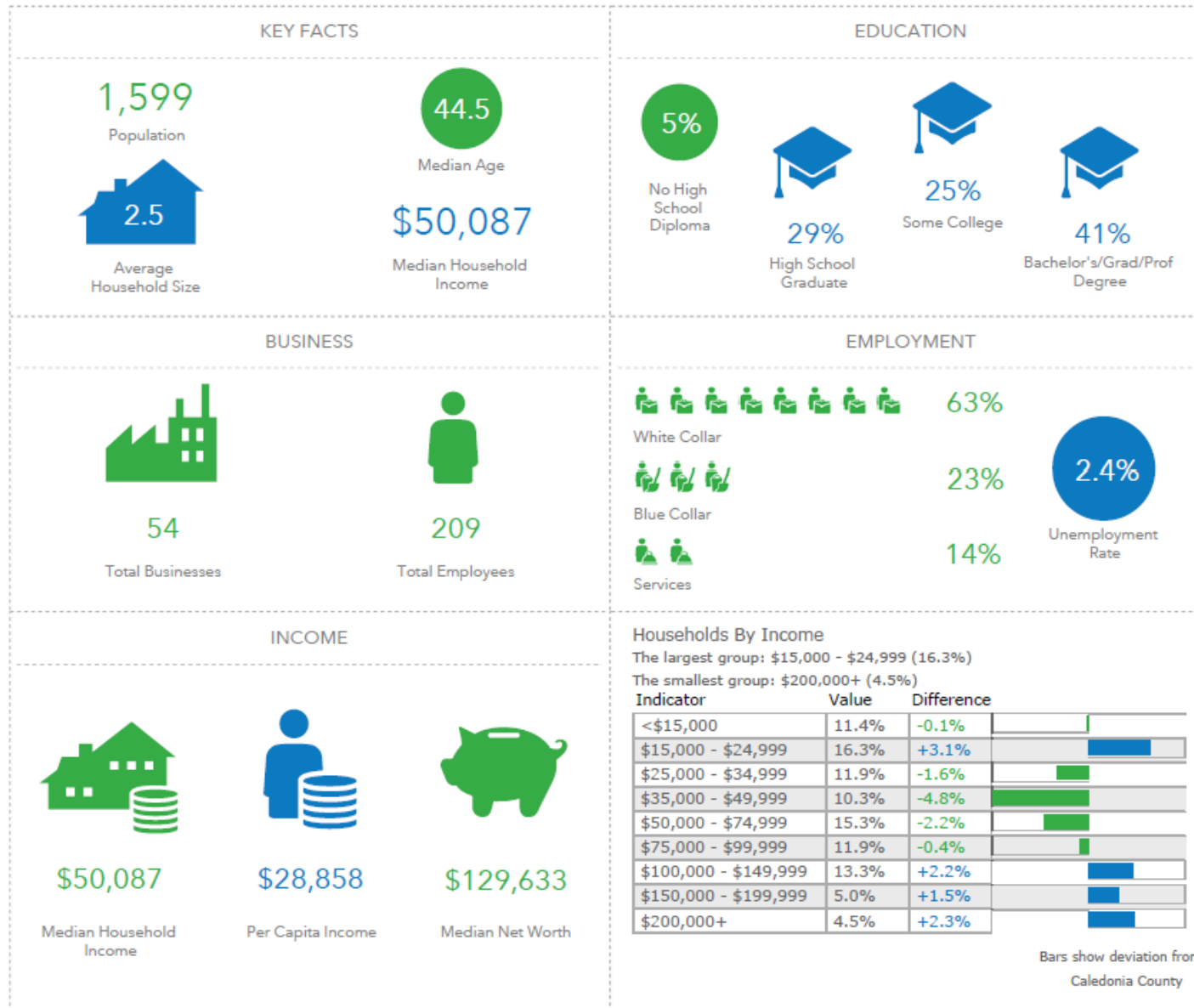
## Households By Income

The largest group: \$50,000 - \$74,999 (23.6%)

The smallest group: <\$15,000 (5.7%)

Indicator	Value	Difference	
<\$15,000	5.7%	-3.0%	
\$15,000 - \$24,999	8.2%	-0.1%	
\$25,000 - \$34,999	9.8%	+0.8%	
\$35,000 - \$49,999	10.2%	-4.5%	
\$50,000 - \$74,999	23.6%	+1.4%	
\$75,000 - \$99,999	12.0%	-2.6%	
\$100,000 - \$149,999	15.5%	+0.7%	
\$150,000 - \$199,999	6.6%	+2.2%	
\$200,000+	8.4%	+5.1%	

Bars show deviation from Orange County



# Town of Calais

CALAIS

## KEY FACTS

1,747

Population



2.4

Average Household Size

49.7

Median Age

\$63,650

Median Household Income

## EDUCATION

3%

No High School Diploma



25%

High School Graduate



24%

Some College



49%

Bachelor's/Grad/Prof Degree

## BUSINESS



39

Total Businesses



166

Total Employees

## EMPLOYMENT



70%

White Collar



15%

Blue Collar



15%

Services

1.4%

Unemployment Rate

## INCOME



\$63,650

Median Household Income



\$33,729

Per Capita Income



\$189,971

Median Net Worth

## Households By Income

The largest group: \$50,000 - \$74,999 (24.4%)

The smallest group: \$150,000 - \$199,999 (3.1%)

Indicator	Value	Difference	
<\$15,000	7.7%	-4.7%	<div style="width: 100%; height: 10px; background-color: #2e8b57;"></div>
\$15,000 - \$24,999	8.3%	-4.7%	<div style="width: 100%; height: 10px; background-color: #2e8b57;"></div>
\$25,000 - \$34,999	5.3%	-4.4%	<div style="width: 100%; height: 10px; background-color: #2e8b57;"></div>
\$35,000 - \$49,999	12.9%	+1.4%	<div style="width: 100%; height: 10px; background-color: #2e8b57;"></div>
\$50,000 - \$74,999	24.4%	+6.1%	<div style="width: 100%; height: 10px; background-color: #0070c0;"></div>
\$75,000 - \$99,999	14.4%	+2.8%	<div style="width: 100%; height: 10px; background-color: #0070c0;"></div>
\$100,000 - \$149,999	20.1%	+6.5%	<div style="width: 100%; height: 10px; background-color: #0070c0;"></div>
\$150,000 - \$199,999	3.1%	-2.2%	<div style="width: 100%; height: 10px; background-color: #2e8b57;"></div>
\$200,000+	3.9%	-0.8%	<div style="width: 100%; height: 10px; background-color: #2e8b57;"></div>

Bars show deviation from Lamoille County

# Town of East Montpelier

EAST MONTPELIER

## KEY FACTS

2,625

Population



2.4

Average Household Size

49.8

Median Age

\$63,543

Median Household Income

## EDUCATION

4%

No High School Diploma



20%

High School Graduate



23%

Some College



53%

Bachelor's/Grad/Prof Degree

## BUSINESS



102

Total Businesses



736

Total Employees

## EMPLOYMENT



81%

White Collar



11%

Blue Collar



8%

Services

0.9%

Unemployment Rate

## INCOME



\$63,543

Median Household Income



\$37,293

Per Capita Income



\$232,498

Median Net Worth

## Households By Income

The largest group: \$50,000 - \$74,999 (27.3%)

The smallest group: \$150,000 - \$199,999 (3.9%)

Indicator	Value	Difference	
<\$15,000	7.2%	-2.7%	
\$15,000 - \$24,999	8.5%	+0.2%	
\$25,000 - \$34,999	6.7%	-1.7%	
\$35,000 - \$49,999	9.8%	-1.5%	
\$50,000 - \$74,999	27.3%	+6.2%	
\$75,000 - \$99,999	13.7%	-1.0%	
\$100,000 - \$149,999	15.3%	-1.1%	
\$150,000 - \$199,999	3.9%	-0.9%	
\$200,000+	7.6%	+2.5%	

Bars show deviation from Washington County



# Town of Elmore

ELMORE

## KEY FACTS

903

Population



Average Household Size

44.8

Median Age

\$60,705

Median Household Income

## EDUCATION

7%

No High School Diploma



27%

High School Graduate



30%

Some College



36%

Bachelor's/Grad/Prof Degree

## BUSINESS



20

Total Businesses



92

Total Employees

## EMPLOYMENT



61%

White Collar



25%

Blue Collar



Services

14%



Unemployment Rate

## INCOME



\$60,705

Median Household Income



\$32,753

Per Capita Income



\$176,014

Median Net Worth

## Households By Income

The largest group: \$50,000 - \$74,999 (19.3%)

The smallest group: \$200,000+ (4.4%)

Indicator	Value	Difference	
<\$15,000	9.3%	-2.2%	
\$15,000 - \$24,999	9.0%	-4.2%	
\$25,000 - \$34,999	9.0%	-4.5%	
\$35,000 - \$49,999	12.6%	-2.5%	
\$50,000 - \$74,999	19.3%	+1.8%	
\$75,000 - \$99,999	14.4%	+2.1%	
\$100,000 - \$149,999	12.9%	+1.8%	
\$150,000 - \$199,999	9.3%	+5.8%	
\$200,000+	4.4%	+2.2%	

Bars show deviation from Caledonia County

# Town of Marshfield

MARSHFIELD

## KEY FACTS

1,613

Population



Average Household Size

44.3

Median Age

\$58,378

Median Household Income

## EDUCATION

5%

No High School Diploma



33%

High School Graduate



23%

Some College



40%

Bachelor's/Grad/Prof Degree

## BUSINESS



64

Total Businesses



327

Total Employees

## EMPLOYMENT



65%

White Collar



22%

Blue Collar



14%

Services

1.2%

Unemployment Rate

## INCOME



\$58,378

Median Household Income



\$28,797

Per Capita Income



\$143,566

Median Net Worth

## Households By Income

The largest group: \$50,000 - \$74,999 (23.1%)

The smallest group: \$150,000 - \$199,999 (2.6%)

Indicator	Value	Difference	
<\$15,000	7.7%	-3.8%	
\$15,000 - \$24,999	10.6%	-2.6%	
\$25,000 - \$34,999	9.5%	-4.0%	
\$35,000 - \$49,999	12.0%	-3.1%	
\$50,000 - \$74,999	23.1%	+5.6%	
\$75,000 - \$99,999	16.6%	+4.3%	
\$100,000 - \$149,999	15.2%	+4.1%	
\$150,000 - \$199,999	2.6%	-0.9%	
\$200,000+	2.6%	+0.4%	

Bars show deviation from Caledonia County

# Town of Middlesex

MIDDLESEX

## KEY FACTS

1,716

Population



2.5

Average Household Size

48.3

Median Age

\$73,489

Median Household Income

## EDUCATION

3%

No High School Diploma



25%

High School Graduate



21%

Some College



52%

Bachelor's/Grad/Prof Degree

## BUSINESS



67

Total Businesses



660

Total Employees

## EMPLOYMENT



68%

White Collar



16%

Blue Collar



16%

Services

1.1%

Unemployment Rate

## INCOME



\$73,489

Median Household Income



\$34,539

Per Capita Income



\$253,221

Median Net Worth

## Households By Income

The largest group: \$100,000 - \$149,999 (21.9%)

The smallest group: \$200,000+ (3.8%)

Indicator	Value	Difference	
<\$15,000	6.3%	-6.1%	
\$15,000 - \$24,999	9.4%	-3.6%	
\$25,000 - \$34,999	5.3%	-4.4%	
\$35,000 - \$49,999	9.2%	-2.3%	
\$50,000 - \$74,999	20.8%	+2.5%	
\$75,000 - \$99,999	15.8%	+4.2%	
\$100,000 - \$149,999	21.9%	+8.3%	
\$150,000 - \$199,999	7.6%	+2.3%	
\$200,000+	3.8%	-0.9%	

Bars show deviation from Lamoille County

## KEY FACTS

7,944

Population



2.0

Average Household Size

45.4

Median Age

\$60,581

Median Household Income

## EDUCATION

5%

No High School Diploma



18%

High School Graduate



17%

Some College



61%

Bachelor's/Grad/Prof Degree

## BUSINESS



930

Total Businesses



10,522

Total Employees

## EMPLOYMENT



83%

White Collar



8%

Blue Collar



9%

Services

1.7%

Unemployment Rate

## INCOME



\$60,581

Median Household Income



\$38,332

Per Capita Income



\$75,718

Median Net Worth

## Households By Income

The largest group: \$50,000 - \$74,999 (23.8%)

The smallest group: \$200,000+ (4.8%)

Indicator	Value	Difference	
<\$15,000	12.1%	+2.2%	
\$15,000 - \$24,999	6.2%	-2.1%	
\$25,000 - \$34,999	8.6%	+0.2%	
\$35,000 - \$49,999	10.4%	-0.9%	
\$50,000 - \$74,999	23.8%	+2.7%	
\$75,000 - \$99,999	14.5%	-0.2%	
\$100,000 - \$149,999	14.2%	-2.2%	
\$150,000 - \$199,999	5.5%	+0.7%	
\$200,000+	4.8%	-0.3%	

Bars show deviation from Washington County

# Town of Moretown

MORETOWN

## KEY FACTS

1,743

Population



Average Household Size

47.8

Median Age

\$76,529

Median Household Income

## EDUCATION

4%

No High School Diploma



24%

High School Graduate



22%

Some College



50%

Bachelor's/Grad/Prof Degree

## BUSINESS



59

Total Businesses



450

Total Employees

## EMPLOYMENT



67%

White Collar



18%

Blue Collar



15%

Services

2.1%

Unemployment Rate

## INCOME



\$76,529

Median Household Income



\$44,798

Per Capita Income



\$255,648

Median Net Worth

## Households By Income

The largest group: \$50,000 - \$74,999 (21.5%)

The smallest group: \$15,000 - \$24,999 (4.2%)

Indicator	Value	Difference	
<\$15,000	5.2%	-4.7%	
\$15,000 - \$24,999	4.2%	-4.1%	
\$25,000 - \$34,999	7.3%	-1.1%	
\$35,000 - \$49,999	10.3%	-1.0%	
\$50,000 - \$74,999	21.5%	+0.4%	
\$75,000 - \$99,999	17.0%	+2.3%	
\$100,000 - \$149,999	17.0%	+0.6%	
\$150,000 - \$199,999	6.0%	+1.2%	
\$200,000+	11.4%	+6.3%	

Bars show deviation from Washington County

# Town of Northfield

NORTHFIELD

## KEY FACTS

6,090

Population



Average Household Size

28.7

Median Age

\$72,733

Median Household Income

## EDUCATION

7%

No High School Diploma



32%

High School Graduate



26%

Some College



35%

Bachelor's/Grad/Prof Degree

## BUSINESS



191

Total Businesses



2,617

Total Employees

## EMPLOYMENT



60%

White Collar



22%

Blue Collar



18%

Services



Unemployment Rate

## INCOME



\$72,733

Median Household Income



\$25,501

Per Capita Income



\$111,932

Median Net Worth

## Households By Income

The largest group: \$100,000 - \$149,999 (25.0%)

The smallest group: \$200,000+ (3.3%)

Indicator	Value	Difference	
<\$15,000	9.7%	+1.0%	
\$15,000 - \$24,999	6.8%	-1.5%	
\$25,000 - \$34,999	6.8%	-2.2%	
\$35,000 - \$49,999	7.1%	-7.6%	
\$50,000 - \$74,999	21.1%	-1.1%	
\$75,000 - \$99,999	17.0%	+2.4%	
\$100,000 - \$149,999	25.0%	+10.2%	
\$150,000 - \$199,999	3.4%	-1.0%	
\$200,000+	3.3%	0	

Bars show deviation from Orange County

# Town of Orange

ORANGE

## KEY FACTS

1,121

Population



2.5

Average Household Size

49.0

Median Age

\$61,550

Median Household Income

## EDUCATION

10%

No High School Diploma



51%

High School Graduate



25%

Some College



15%

Bachelor's/Grad/Prof Degree

## BUSINESS



12

Total Businesses



54

Total Employees

## EMPLOYMENT



65%

White Collar



22%

Blue Collar



13%

Services

1.7%

Unemployment Rate

## INCOME



\$61,550

Median Household Income



\$28,241

Per Capita Income



\$193,505

Median Net Worth

## Households By Income

The largest group: \$75,000 - \$99,999 (21.3%)

The smallest group: \$200,000+ (0.7%)

Indicator	Value	Difference	
<\$15,000	5.3%	-3.4%	
\$15,000 - \$24,999	9.1%	+0.8%	
\$25,000 - \$34,999	8.2%	-0.8%	
\$35,000 - \$49,999	15.5%	+0.8%	
\$50,000 - \$74,999	20.8%	-1.4%	
\$75,000 - \$99,999	21.3%	+6.7%	
\$100,000 - \$149,999	14.6%	-0.2%	
\$150,000 - \$199,999	4.2%	-0.2%	
\$200,000+	0.7%	-2.6%	

Bars show deviation from Orange County

# Town of Plainfield

PLAINFIELD

## KEY FACTS

1,232

Population



Average Household Size

46.1

Median Age

\$57,251

Median Household Income

## EDUCATION

7%

No High School Diploma



26%

High School Graduate



26%

Some College



41%

Bachelor's/Grad/Prof Degree

## BUSINESS



47

Total Businesses



322

Total Employees

## EMPLOYMENT



63%

White Collar



18%

Blue Collar



19%

Services

5.3%

Unemployment Rate

## INCOME



\$57,251

Median Household Income



\$32,519

Per Capita Income



\$146,852

Median Net Worth

## Households By Income

The largest group: \$35,000 - \$49,999 (20.5%)

The smallest group: \$200,000+ (3.0%)

Indicator	Value	Difference	
<\$15,000	10.1%	+1.4%	
\$15,000 - \$24,999	4.4%	-3.9%	
\$25,000 - \$34,999	8.4%	-0.6%	
\$35,000 - \$49,999	20.5%	+5.8%	
\$50,000 - \$74,999	17.7%	-4.5%	
\$75,000 - \$99,999	13.9%	-0.7%	
\$100,000 - \$149,999	15.8%	+1.0%	
\$150,000 - \$199,999	6.3%	+1.9%	
\$200,000+	3.0%	-0.3%	

Bars show deviation from Orange County



# Town of Roxbury

ROXBURY

## KEY FACTS

716

Population



Average Household Size

47.8

Median Age

\$52,376

Median Household Income

## EDUCATION

10%

No High School Diploma



31%

High School Graduate



26%

Some College



33%

Bachelor's/Grad/Prof Degree

## BUSINESS



27

Total Businesses



123

Total Employees

## EMPLOYMENT



53%

White Collar



27%

Blue Collar



20%

Services

3.3%

Unemployment Rate

## INCOME



\$52,376

Median Household Income



\$28,931

Per Capita Income



\$125,730

Median Net Worth

## Households By Income

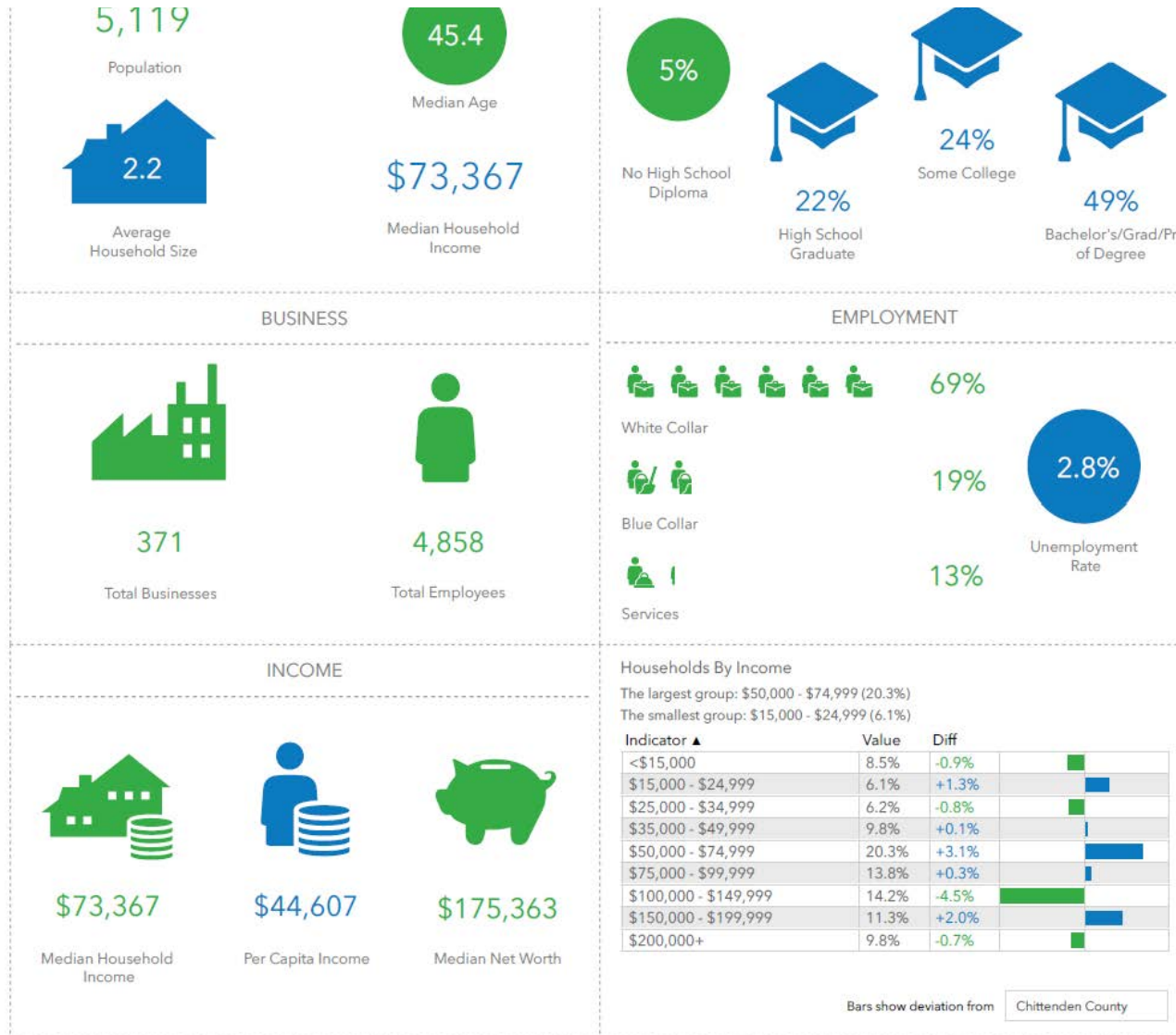
The largest group: \$50,000 - \$74,999 (27.2%)

The smallest group: \$150,000 - \$199,999 (1.9%)

Indicator	Value	Difference	
<\$15,000	13.5%	+4.8%	
\$15,000 - \$24,999	6.4%	-1.9%	
\$25,000 - \$34,999	9.0%	0	
\$35,000 - \$49,999	17.0%	+2.3%	
\$50,000 - \$74,999	27.2%	+5.0%	
\$75,000 - \$99,999	11.2%	-3.4%	
\$100,000 - \$149,999	10.6%	-4.2%	
\$150,000 - \$199,999	1.9%	-2.5%	
\$200,000+	3.2%	-0.1%	

Bars show deviation from Orange County

# Waterbury



# Town of Williamstown

WILLIAMSTOWN

## KEY FACTS

3,489

Population



2.4

Average Household Size

44.8

Median Age

\$56,320

Median Household Income

## EDUCATION

6%

No High School Diploma



50%

High School Graduate



30%

Some College



14%

Bachelor's/Grad/Prof Degree

## BUSINESS



92

Total Businesses



640

Total Employees

## EMPLOYMENT



58%

White Collar



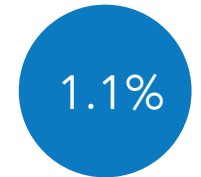
26%

Blue Collar



Services

16%



1.1%

Unemployment Rate

## INCOME



\$56,320

Median Household Income



\$27,549

Per Capita Income



\$130,759

Median Net Worth

## Households By Income

The largest group: \$50,000 - \$74,999 (18.7%)

The smallest group: \$200,000+ (1.0%)

Indicator	Value	Difference	
<\$15,000	8.7%	0	
\$15,000 - \$24,999	8.2%	-0.1%	<div style="width: 100%; height: 10px; background-color: #ccc;"></div>
\$25,000 - \$34,999	13.0%	+4.0%	<div style="width: 100%; height: 10px; background-color: #0070c0;"></div>
\$35,000 - \$49,999	13.8%	-0.9%	<div style="width: 100%; height: 10px; background-color: #ccc;"></div>
\$50,000 - \$74,999	18.7%	-3.5%	<div style="width: 100%; height: 10px; background-color: #0070c0;"></div>
\$75,000 - \$99,999	18.4%	+3.8%	<div style="width: 100%; height: 10px; background-color: #0070c0;"></div>
\$100,000 - \$149,999	15.3%	+0.5%	<div style="width: 100%; height: 10px; background-color: #ccc;"></div>
\$150,000 - \$199,999	2.8%	-1.6%	<div style="width: 100%; height: 10px; background-color: #ccc;"></div>
\$200,000+	1.0%	-2.3%	<div style="width: 100%; height: 10px; background-color: #ccc;"></div>

Bars show deviation from Orange County

# Town of Woodbury

WOODBURY

## KEY FACTS

1,047

Population



Average Household Size

49.7

Median Age

\$70,812

Median Household Income

## EDUCATION

3%

No High School Diploma



33%

High School Graduate



27%

Some College



37%

Bachelor's/Grad/Prof Degree

## BUSINESS



26

Total Businesses



115

Total Employees

## EMPLOYMENT



69%

White Collar



23%

Blue Collar



Services

8%

5.0%

Unemployment Rate

## INCOME



\$70,812

Median Household Income



\$36,940

Per Capita Income



\$206,306

Median Net Worth

## Households By Income

The largest group: \$50,000 - \$74,999 (22.7%)

The smallest group: \$150,000 - \$199,999 (3.7%)

Indicator	Value	Difference	
<\$15,000	8.9%	-2.6%	
\$15,000 - \$24,999	7.6%	-5.6%	
\$25,000 - \$34,999	7.6%	-5.9%	
\$35,000 - \$49,999	6.0%	-9.1%	
\$50,000 - \$74,999	22.7%	+5.2%	
\$75,000 - \$99,999	21.2%	+8.9%	
\$100,000 - \$149,999	17.7%	+6.6%	
\$150,000 - \$199,999	3.7%	+0.2%	
\$200,000+	4.8%	+2.6%	

Bars show deviation from Caledonia County

# Town of Worcester

WORCESTER

## KEY FACTS

999

Population



2.5

Average Household Size

46.4

Median Age

\$59,670

Median Household Income

## EDUCATION

4%

No High School Diploma



25%

High School Graduate



24%

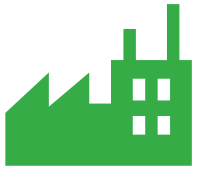
Some College



47%

Bachelor's/Grad/Prof Degree

## BUSINESS



27

Total Businesses



102

Total Employees

## EMPLOYMENT



69%

White Collar



19%

Blue Collar



Services

11%



1.4%

Unemployment Rate

## INCOME



\$59,670

Median Household Income



\$30,141

Per Capita Income



\$183,807

Median Net Worth

## Households By Income

The largest group: \$50,000 - \$74,999 (20.4%)

The smallest group: \$200,000+ (2.8%)

Indicator	Value	Difference	
<\$15,000	3.1%	-9.3%	
\$15,000 - \$24,999	9.4%	-3.6%	
\$25,000 - \$34,999	10.2%	+0.5%	
\$35,000 - \$49,999	17.3%	+5.8%	
\$50,000 - \$74,999	20.4%	+2.1%	
\$75,000 - \$99,999	14.5%	+2.9%	
\$100,000 - \$149,999	17.1%	+3.5%	
\$150,000 - \$199,999	5.1%	-0.2%	
\$200,000+	2.8%	-1.9%	

Bars show deviation from Lamoille County